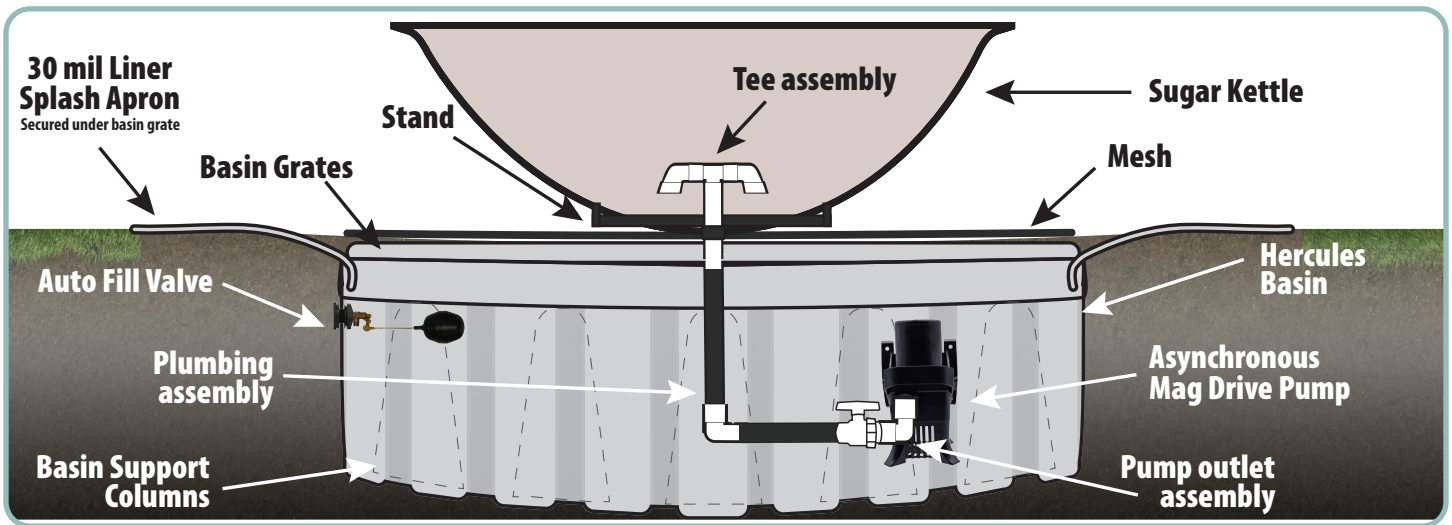


Sugar Kettle Fountain Kit GK39 • GK48 • GK60



Install & Prep Basin



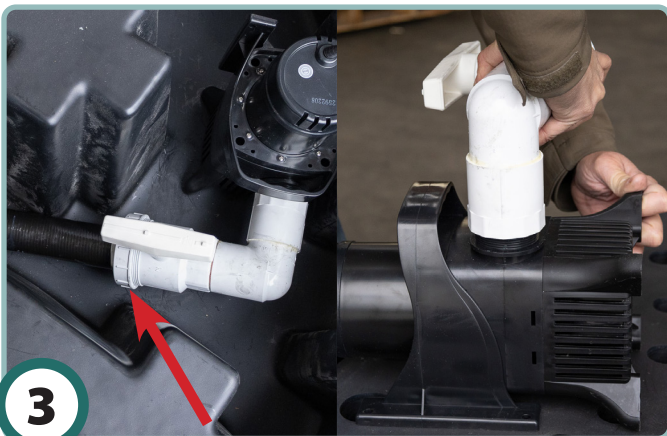
1

Install basin on a stable, level and compacted surface. Remove grates from basin.



2

Install the fill valve following the instructions included. See illustration at top of page.



3

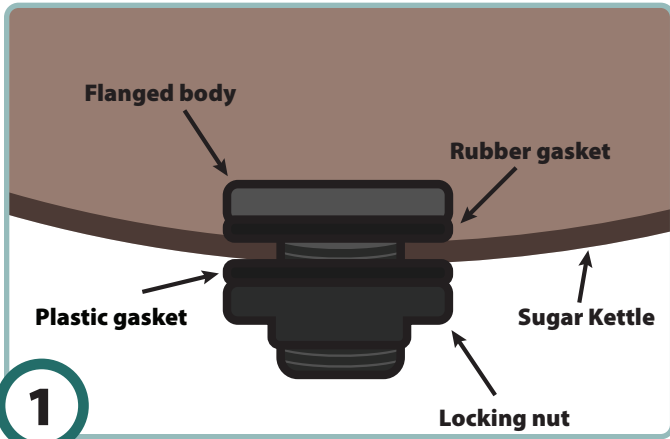
Remove plumbing assembly from pump outlet assembly using the union on the ball valve. (See photo above) Thread outlet assembly to pump. Finger tighten only, **do not over tighten!**



4

Place pump vertically in basin with the pump outlet assembly facing the center of the basin. Place directly across the basin from fill valve.

Kettle Prep



1

Safely lift and secure the kettle in an upright and level position. Install the bulkhead in the bottom of the kettle as shown.



2

Thread the 2" male adapter into the bulk head on the underside of the kettle. Hand tighten, plus 1/4 turn. **Do not over tighten!**



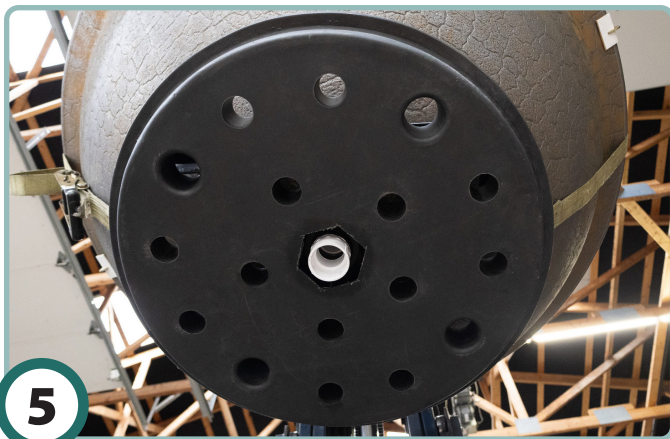
3

Thread the tee assembly into the top side of the bulkhead inside the kettle. Finger tighten only, **do not over tighten!**



4

Secure the cradle stand to the bottom of the kettle using a strap to temporarily hold in position.



5

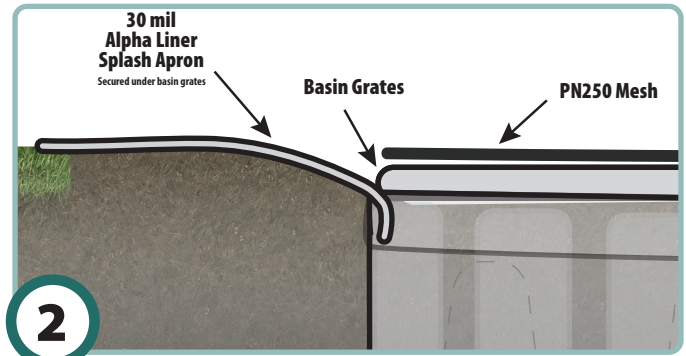
Lift the basin's center grate over the male adapter and bulkhead fitting under the kettle. Twist the grate so the bulkhead holds it in place under the kettle.

Install Kettle



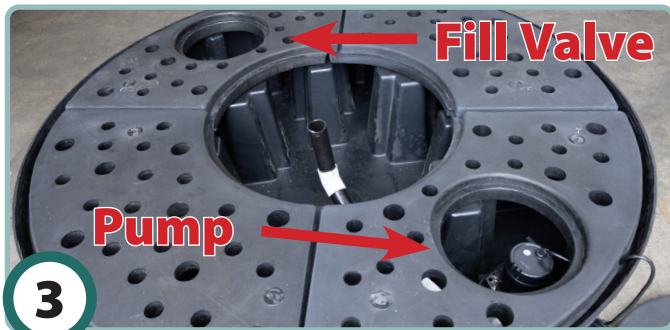
1

Position kettle over the center of the basin and lower approximately 1 foot above the basin. Glue the plumbing assembly into the male adapter.



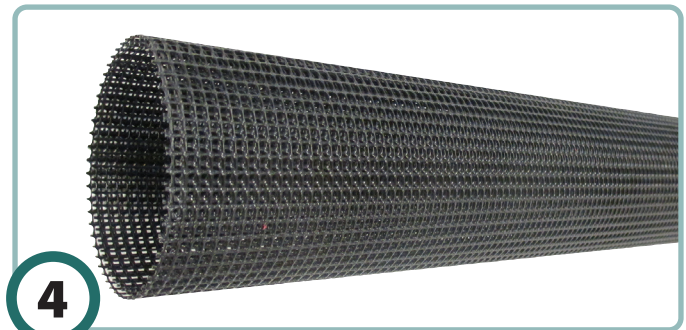
2

Install splash apron liner around basin. Pitch the liner towards the basin to allow splash to flow back into the basin.



3

Install all basin grates, except for the grate that goes over the pump (do not install until step 6) and the center grate that is under the bowl. Be sure to install one of the grates with access port over fill valve.



4

Install the plastic mesh over the top of the basin.



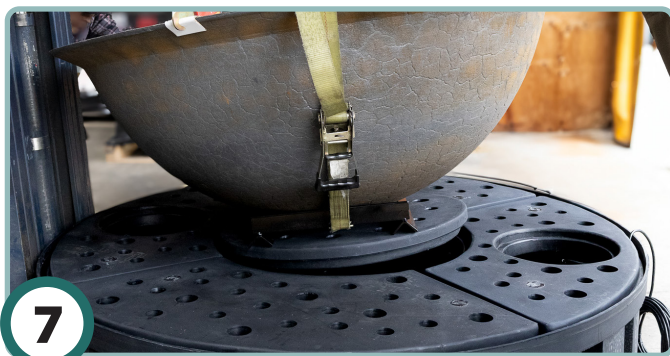
5

Lower the kettle until it is almost in its final position, connect the plumbing assembly to the pump outlet assembly.



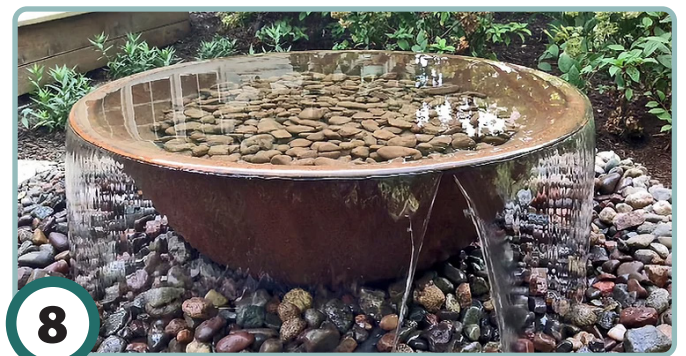
6

Install the grate with access cover over the pump.



7

Finish lowering the kettle, stand and center grate into position.



8

Level the kettle and fill the basin with water.